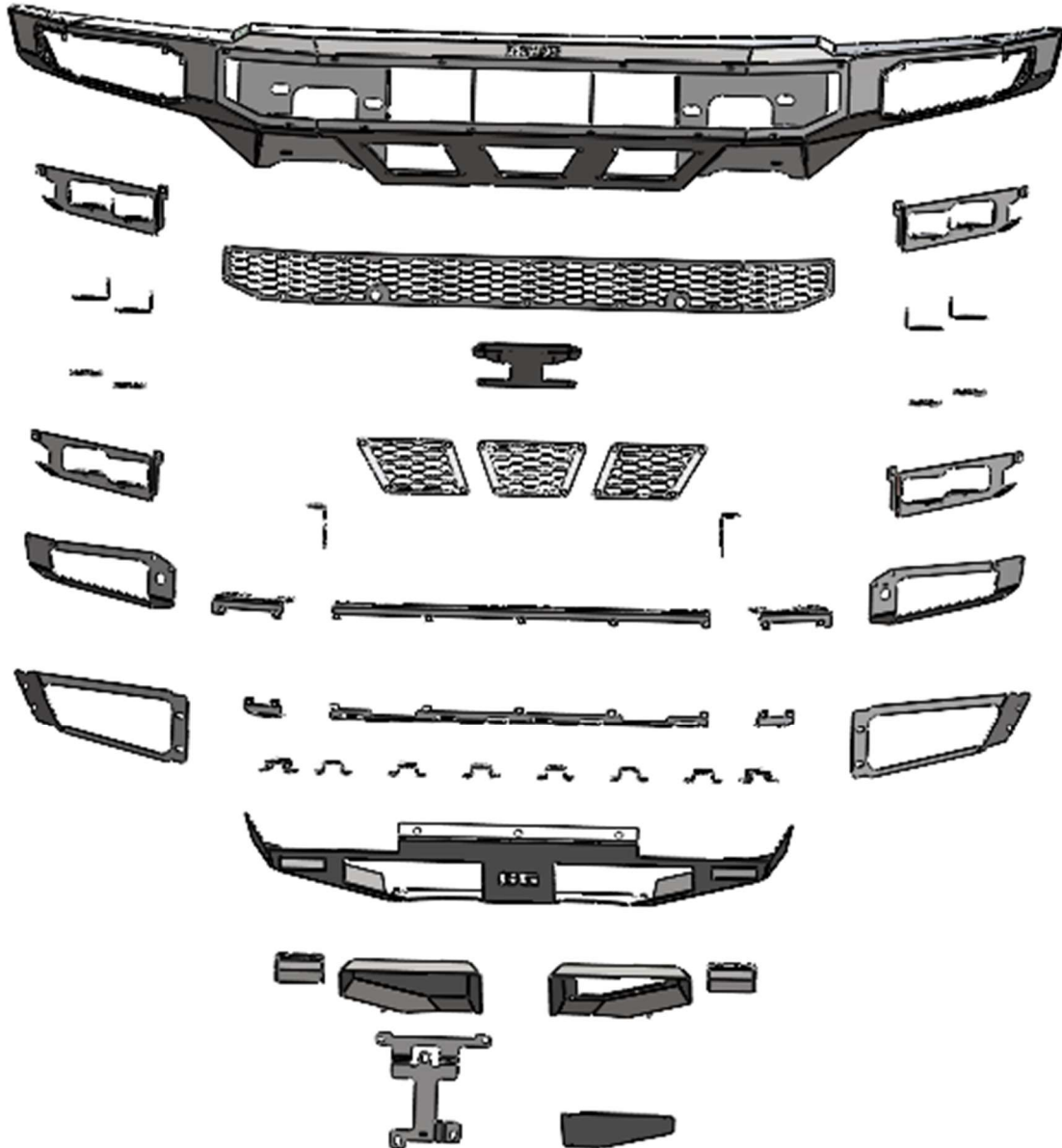
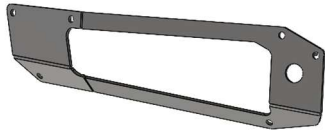


INSTALLATION GUIDE

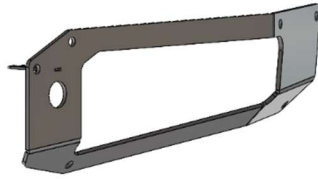
PARTS



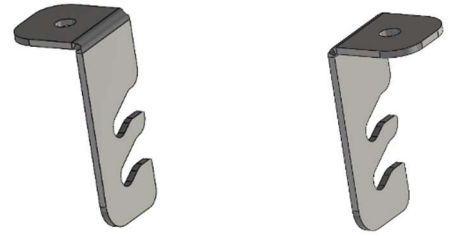
Exploded View



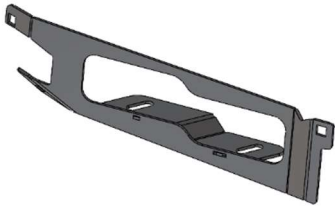
Passenger Side Fog Light Plate



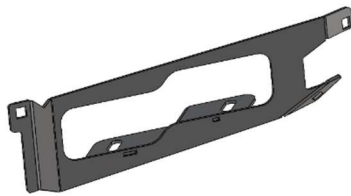
Driver Side Fog Light Plate



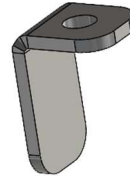
Passenger and Driver Light Bar Mounts



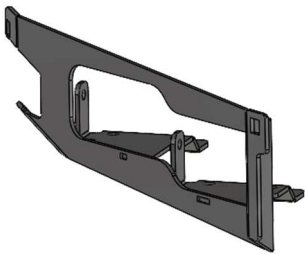
Passenger Side Fog Light Bucket (RIGID)



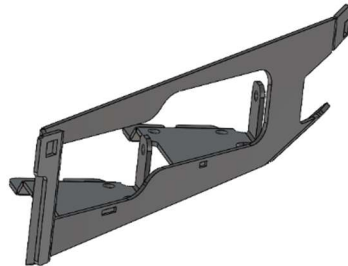
Driver Side Fog Light Bucket (RIGID)



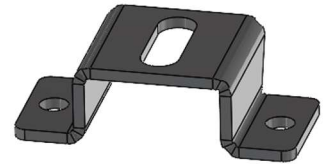
Parking Sensor Tabs x4



Passenger Side Fog Light Bucket (OEM)



Driver Side Fog Light Bucket (OEM)



3x3 Cube Light Mounts x8



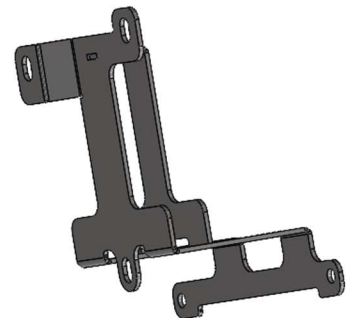
Passenger Side Fog Light Tabs x2 (OEM)



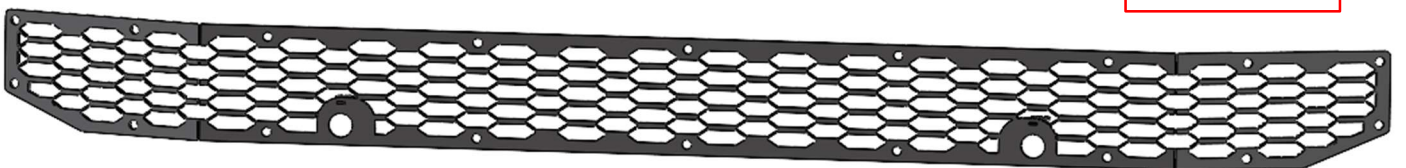
Driver Side Fog Light Tabs x2 (OEM)



OEM Fog Light Spacers x4



ACC Bracket



Center Mesh (Sensors)



Upper Passenger Side Mesh Mount



Upper Center Mesh Mount



Upper Driver Side Mesh Mount



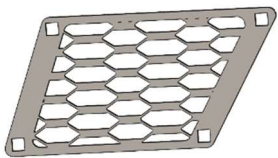
Lower Passenger Side Mesh Mount



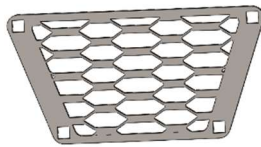
Lower Center Mesh Mount



Lower Driver Side Mesh Mount



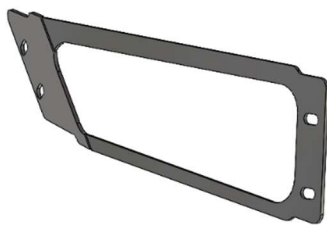
Side Air Dam Mesh x2



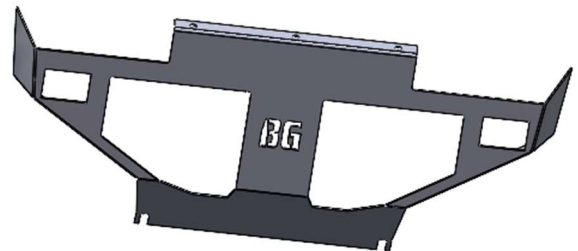
Center Air Dam Mesh



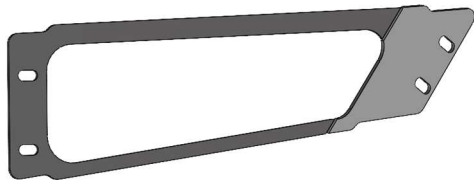
License Plate Bracket



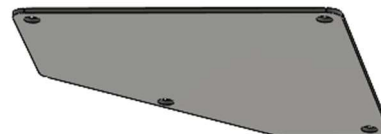
Passenger Wing Brace



Skid Plate



Driver Wing Brace



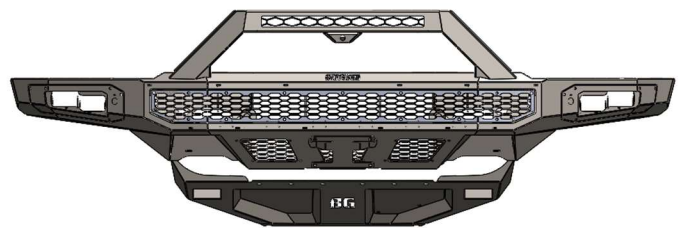
SKID PLATE ACCESS PLATES x1

HARDWARE

Freedom Front License Plate	Qty:
1/4-20 x 3/4 Long, Stainless Steel SBHCS	2
1/4-20 Hex Grade 5 Serrated Flange Nut, Stainless Steel	2
Plastic License Plate Nuts	4
#14 x 5/8" Zinc License Plate Screw	4
Freedom Front Light Bar and Mesh (Including Air Dam)	Qty
1/4-20 x 5/8 Long, Stainless Steel SBHCS	50
1/4-20 Hex Grade 5 Serrated Flange Nut, Stainless Steel	20
1/4-20 (.093-.126: Panel Range) Zinc Electroplate Spring Steel Cage Nut	30
Freedom Front Sensor Mounts	Qty
1/4-20 x 5/8 Long, Stainless Steel SBHCS	4
1/4-20 Hex Grade 5 Serrated Flange Nut, Stainless Steel	4
Freedom Front Fog Light Assembly	Qty:
1/4-20 x 5/8 Long, Stainless Steel SBHCS	14
1/4-20 (.093-.126: Panel Range) Zinc Electroplate Spring Steel Cage Nut	14
Freedom Front 3x3 Cube Light Mounts	Qty:
1/4-20 x 5/8 Long, Stainless Steel SBHCS	16
1/4-20 Hex Grade 5 Serrated Flange Nut, Stainless Steel	16
Freedom Front Skid Plate	Qty
5/16"-18 x 1" Long, Stainless Steel SBHCS	3
5/16"-18, Flange nut	3
5/16", Washer	3
1/4-20 x 5/8 Long, Stainless Steel SBHCS	4
J Type Cage Nut 1/4" – 20	4
Freedom Front Sport	Qty
Camera Wiring Harness #89758	<u>1</u>
1/4-20 x 5/8 Long, Stainless Steel SBHCS	4
1/4-20 Hex Grade 5 Serrated Flange Nut, Stainless Steel	2
1/4-20 (.093-.126: Panel Range) Zinc Electroplate Spring Steel Cage Nut	2
Freedom Front Mount Kit 21+ Raptor Winch	Qty
7/16"-14 x 1-1/4" Yellow Zinc Grade 8 Bolt (BLACK)	6
7/16 Washer, Grade 8 Zinc-Yellow	6
7/16-14 Grade 8 Steel Serrated Flange Nut Zinc	6



Base



Sport

CENTER LIGHT BAR CONFIGURATION (Optional)



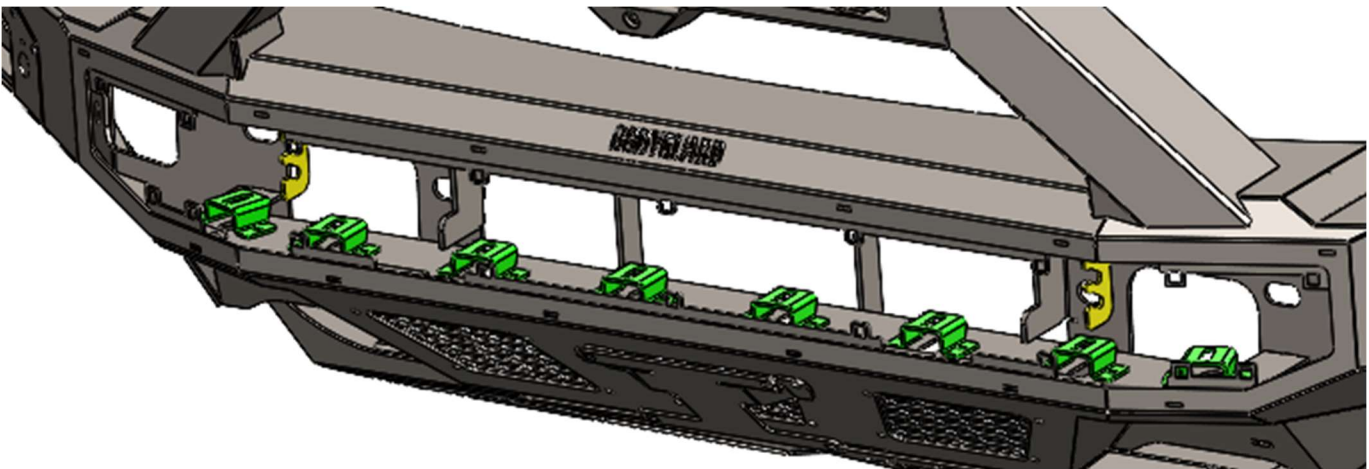
Rigid 130313 E-Series - 30" Bar - Spot/Flood Combo Pattern



Rigid 130313 E-Series - 30" Bar - Spot/Flood Combo Pattern
Rigid 202113 D-Series Pro Cube - Flood Pattern - Surface Mount (pair)



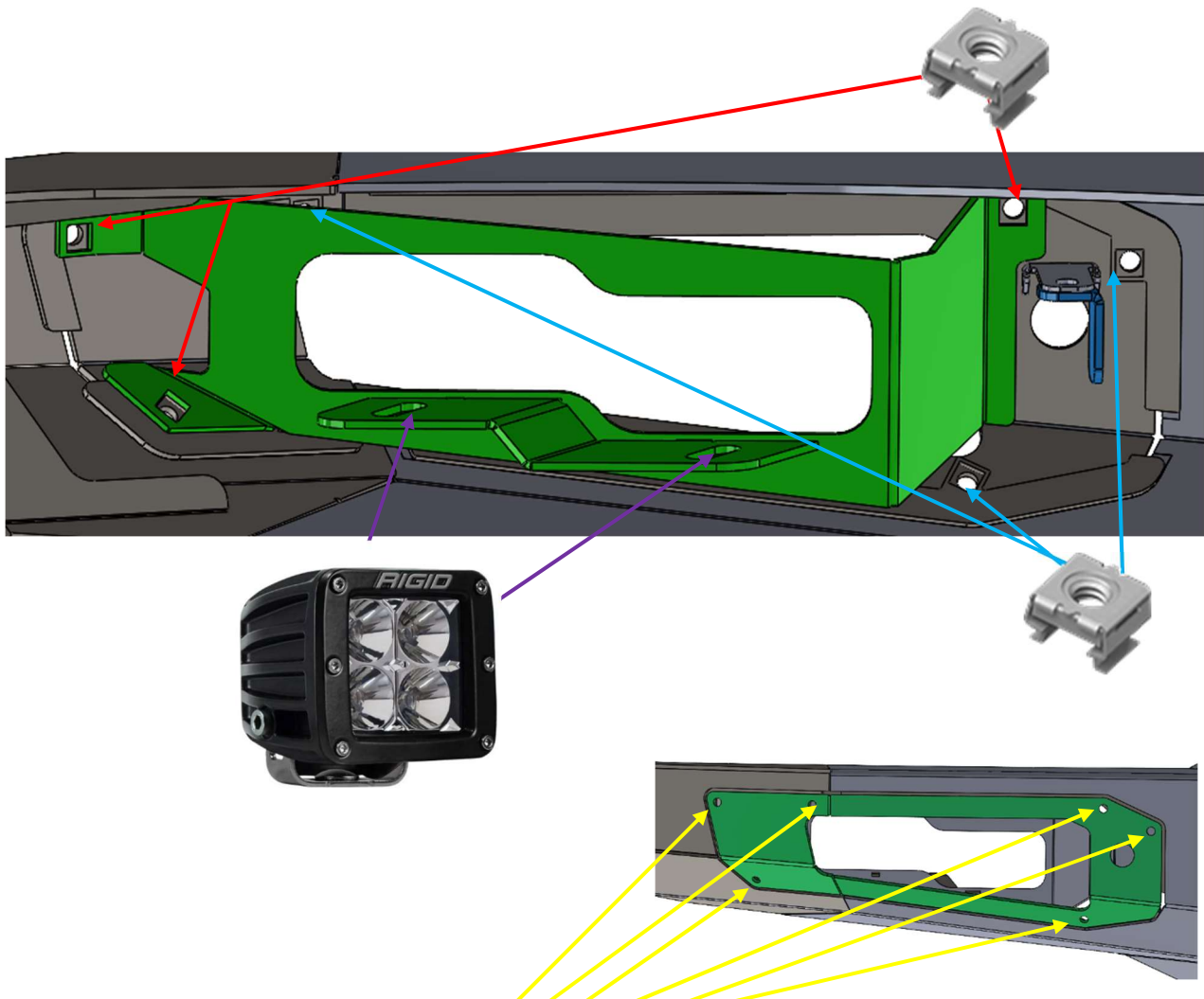
Rigid 321113 D-XL Pro - 4"x4" Cube - Spot or Flood Combo Pattern



1. 3x3 cube lights can be installed using the slotted holes in the brackets pictured in green.
2. 4x4 cube lights do not require mounting brackets.
3. Also, light bar mount brackets (pictured in yellow) are included to allow the use of a 30" light bar.

FOG LIGHT INSTALLATION

1. Install cage nuts in fog light trim (**blue arrows**) and the fog light bucket (**red arrows**).
2. Insert button-head screws through fog light plate and into cage nuts and tighten (**yellow arrows**).
3. Cube lights can be secured to the tab on the back of the fog light bucket (**purple arrow**).

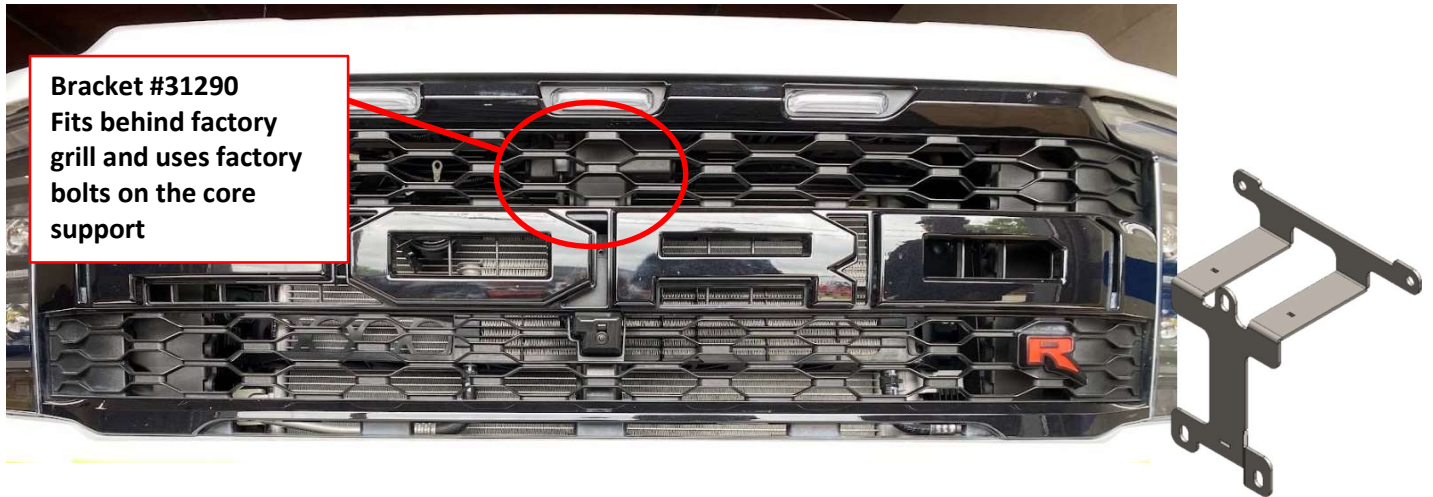


1/4-20 x 5/8 Long, Stainless Steel Bolt (6)

4. If you are using the factory installed Rigid Industries fog lights use the provided mounting brackets as pictured below with the (4) 1/2"-13 x 1-1/2" Long hardware. Adjust, aim, and tighten hardware. Plug in the lights to the factory harness and secure the wiring as necessary.



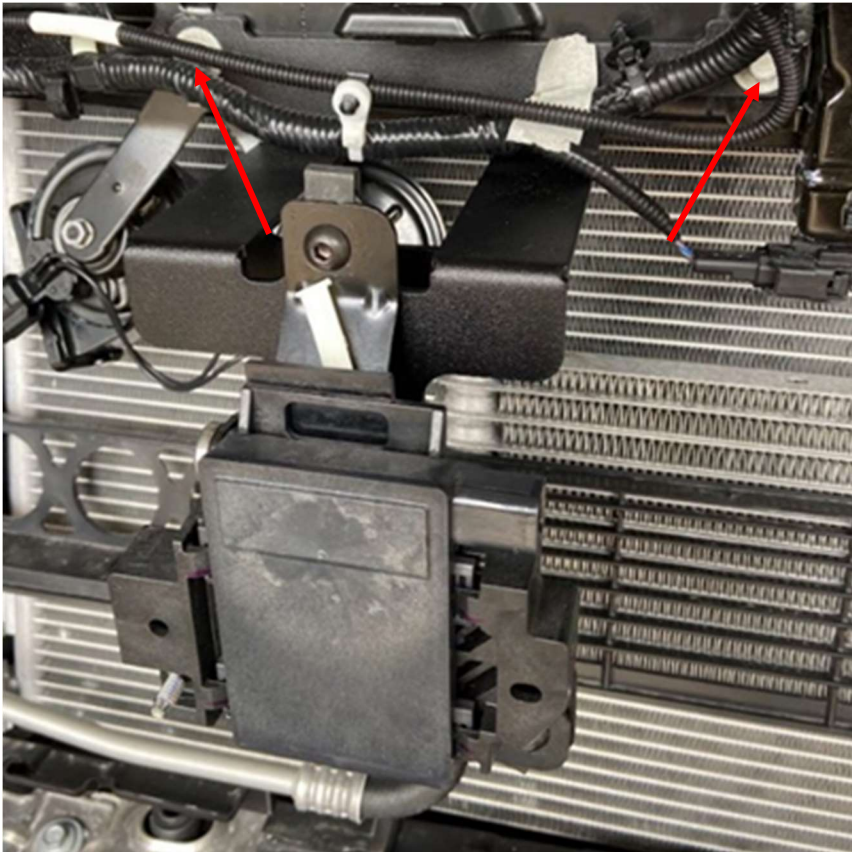
ADAPTIVE CRUISE CONTROL RELOCATION BRACKET



Bracket #31290
Fits behind factory
grill and uses factory
bolts on the core
support

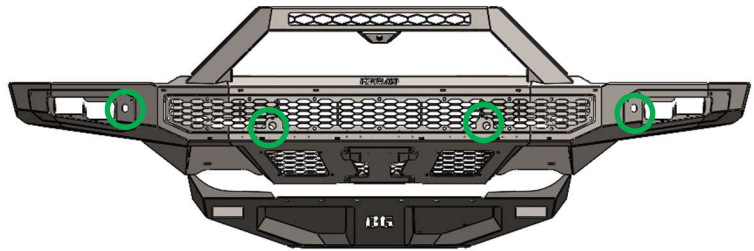
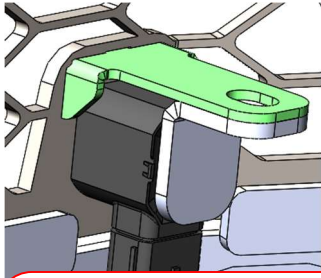
ADAPTIVE CRUISE CONTROL RELOCATION BRACKET (Optional)

1. Remove the horn by removing 2x 13mm screws. Install the ACC relocation bracket in between the horn mount and the core support. Close the hood to make sure everything is in the proper position. Calibrate your ACC module by adjusting angle on the bracket. Place a level on the non-raised face of the ACC module. Once module is leveled, tighten all the hardware connecting the mount to the bracket. Plug in the ACC module (**you may need to unravel the ACC cable from the harness to gain length to reach the module**). **Reinstall all front-end components that were removed.**



PARKING SENSOR INSTALL

1. Then install the sensor tab over the sensor shown below. Slide the sensor and sensor tab into position and tighten down with a 1/4"-20 x 3/4" BHCS. Plug the parking sensors into the harness and let the center mesh and fog light trim rings loosely hang down.



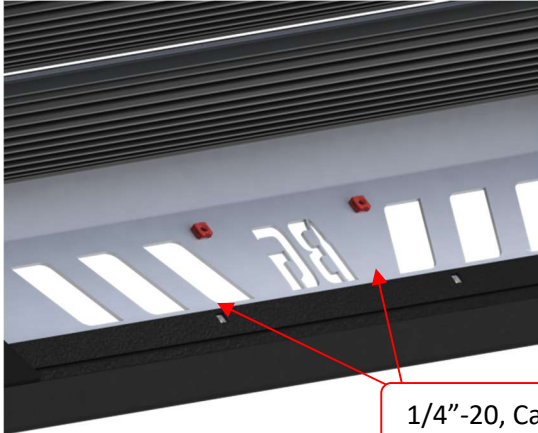
(6) - 1/4-20 x 5/8 Long, Stainless Steel SBHCS



(6) - 1/4-20 Hex Grade 5 Serrated Flange Nut, Stainless Steel

LICENSE PLATE INSTALL

1. Install (2) 1/4"-20 Cage Nuts into square holes, then the install license plate bracket to the skid plate using (2) 1/4"-20 x 5/8" button head screws



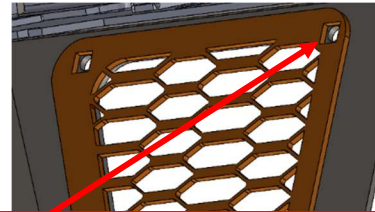
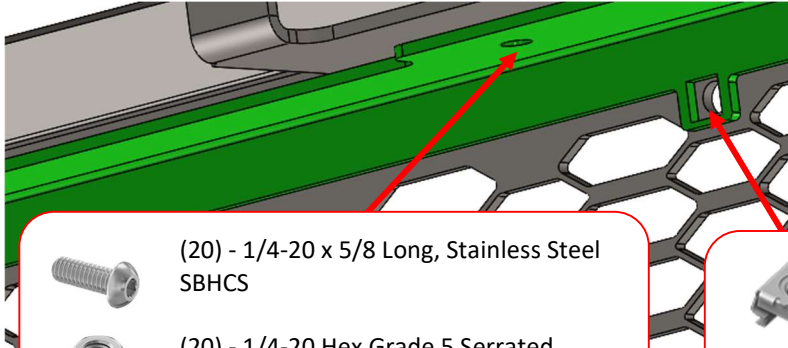
1/4"-20, Cage Nut





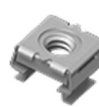

1/4"-20 x 5/8", SBHCS

MESH PLATE INSTALL

1. Mount brackets for the center mesh are bolt-on components. They should be installed with a total of 18 1/4-20 x 5/8 Long, Stainless Steel Bolts and hex nuts.
2. Install cage nuts into the appropriate holes in the air dam mesh components (12 nuts) and center mesh mount brackets (18 nuts).
3. Use provided 1/4-20 x 5/8 Long, Stainless Steel Bolts (30) to secure mesh plates.





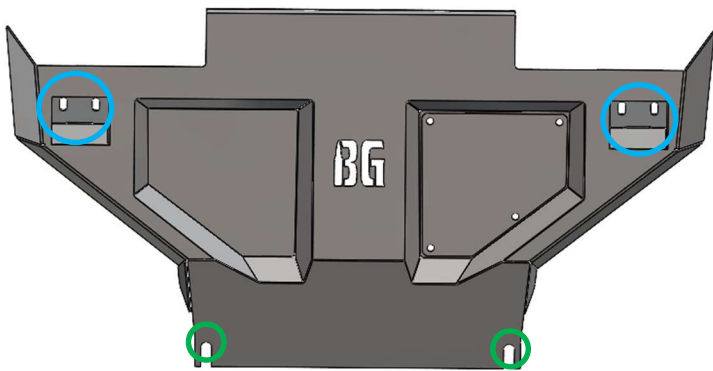
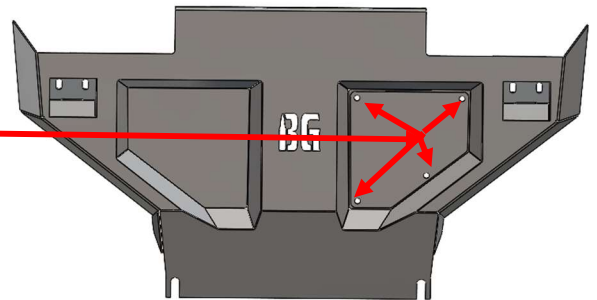
-  (20) - 1/4-20 x 5/8 Long, Stainless Steel SBHCS
-  (20) - 1/4-20 Hex Grade 5 Serrated Flange Nut, Stainless Steel

-  (34) - 1/4-20 (.093-.126: Panel Range) Zinc Electroplate Spring Steel Cage Nut
-  (34) - 1/4-20 x 5/8 Long, Stainless Steel SBHCS

SKID PLATE INSTALL

1. The access panel on the primary skid plate should be secured using (4) 1/4-20 x 5/8 Long stainless button head screws and hex nuts.

-  (4) - 1/4-20 x 5/8 Long, Stainless Steel SBHCS
-  (4) - J Type Cage Nut 1/4" - 20

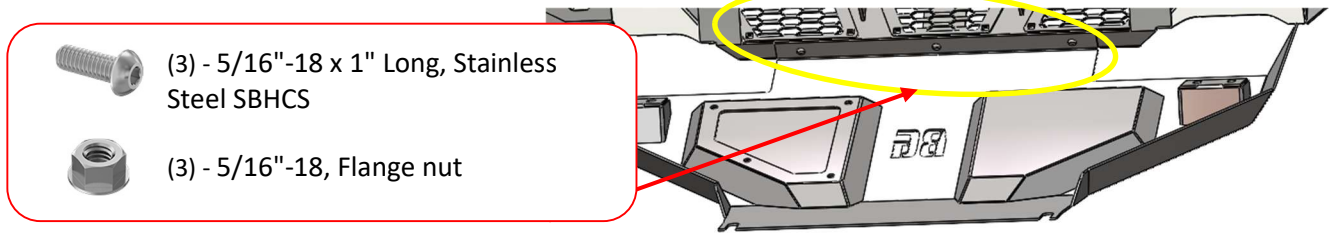


2. Slide the two open bolt channels (circled in green) onto the two rear factory bolts to hold the skid plate in place.

3. Use the OEM hardware to secure the skid plate to the frame at the two locations circled in blue.

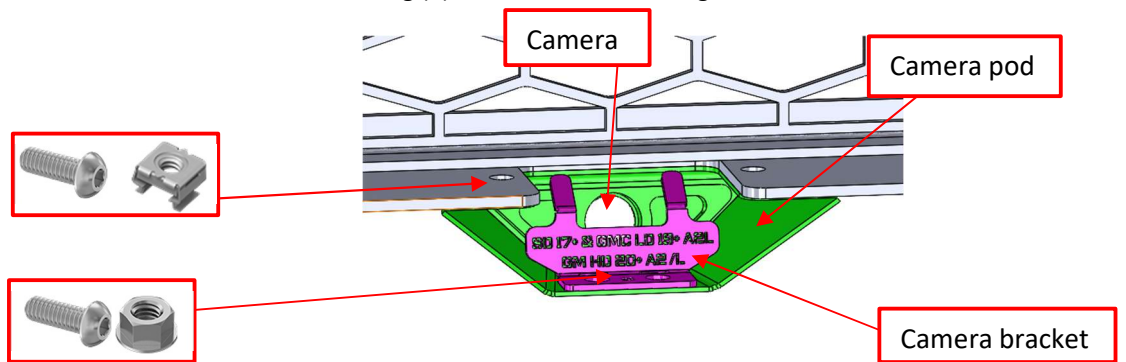
4. Tighten all hardware to ensure secure fit.

- Once the bumper is mounted to the truck frame, secure the bash plate to the primary skid plate using (3) 5/16"-18 x 1" stainless button head screws and flange nuts.

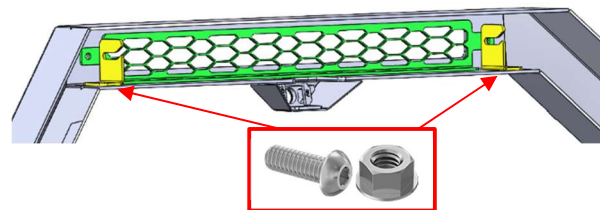


SPORT BAR CAMERA INSTALL *(For optional sport bar only)*

- Install the camera pod to the sport bar using (2) 1/4"-20 cage nuts and (2) 1/4"-20 x 3/4" BHCS. Then install the camera into the pod and secure with the camera bracket using (2) 1/4"-20 BHCS and flange nuts.
-

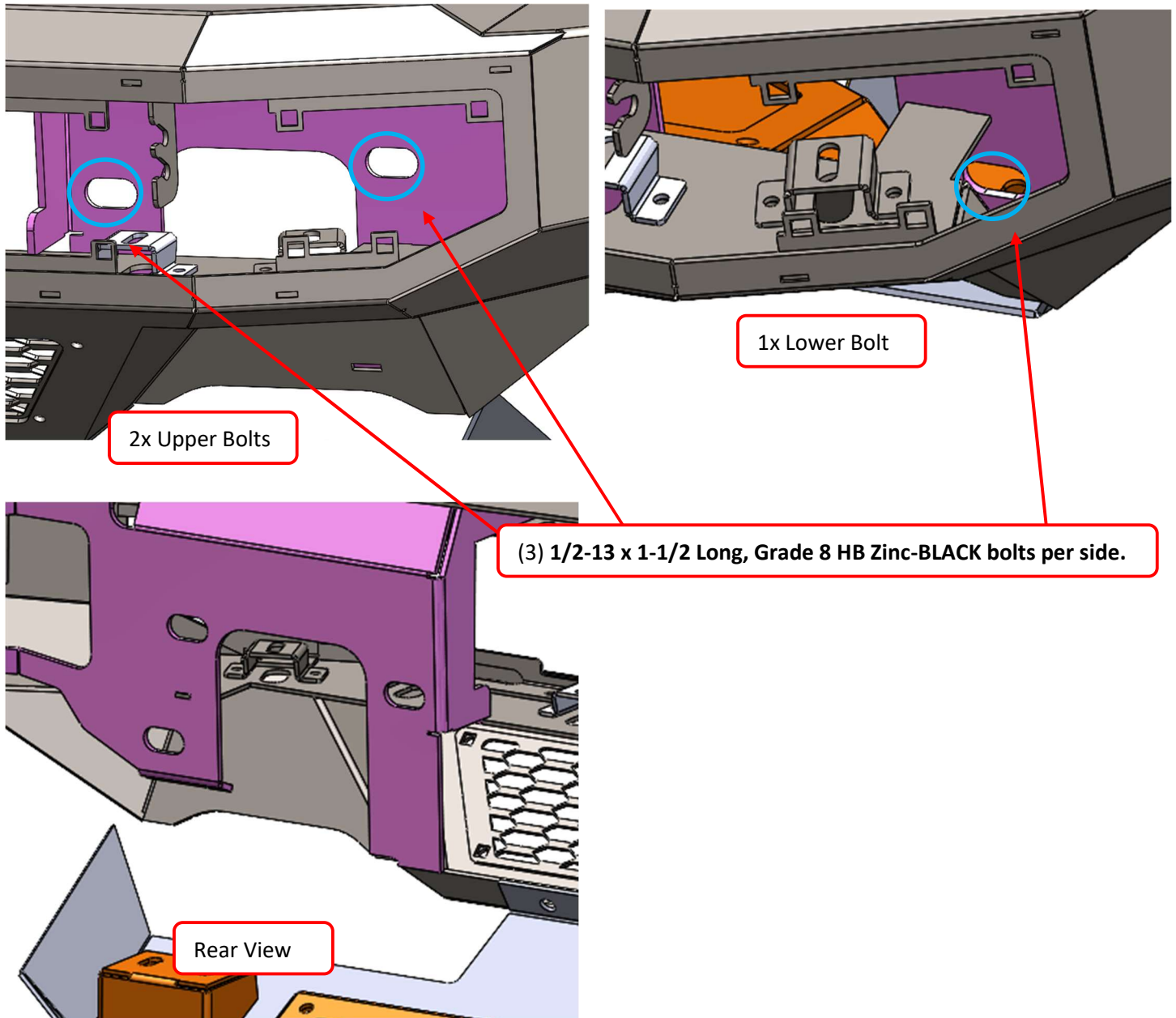


- Then install the sport bar mesh using (2) 1/4"-20 x 3/4" BHCS and flange nuts. Then install your light bar using the light bar brackets if applicable.



BUMPER INSTALL

1. Install the bumper to the frame using the (6) 1/2" bolts and washers provided.



2. Using a tape measure, adjust the bumper vertically and horizontally to the desired body gaps. Once the bumper is lined up, tighten all hardware for the bumper and the mounts. Using jack stands or an additional person to help support the bumper is recommended.
3. Now that the bumper is mounted and installed, wire in the lighting and electrical components. Route and secure wiring as desired.

NOTE: The camera harness will go under the bumper top plate up through a cut hole in the uprights to the camera mount in the grill.

SAFETY

THE SAFETY OF YOU AND OTHERS IS VERY IMPORTANT TO US!

To minimize this risk and make an informed decision about safety, it is important that you carefully read and follow the installation instructions we have provided.

We urge you to use your own good judgment and allow plenty of time for installation.

HAZARD CHECKLIST

1. Always wear personal protective equipment (PPE) such as: protective eye wear, gloves, close toed shoes, etc.
2. We recommend that you use a certified mechanic or shop for professional installation.
3. Always set emergency brakes on the vehicle and use tire blocks to ensure vehicle stabilization.
4. Use caution when lifting, we recommend the use of equipment to help lift bumpers into place.
5. Use caution when using power tools such as air ratchet, etc.
6. Take caution when installing wiring.
7. Perform regular inspections of hardware, bolts, brackets, etc.
8. Rigid light brackets are specifically designed to fit Rigid lights, we do not guarantee off brand fitment.
9. Our winch mount is designed for Warn and Superwinch products. We do not guarantee off-brand fitment.

USE & RISK

Bodyguard Products LLC is not responsible for damage to our products, or other subsequent damage that might occur because of misuse or improper installation. While we do manufacture products that appear stronger than factory parts, our products should not be viewed or relied upon as life-saving devices in the event of a collision or rollover. We make no claims relating to airbag compatibility, crashworthiness, or sturdiness. It is the customer's responsibility to check with the vehicle manufacturer or auto dealer regarding airbag compatibility and automobile manufacturer's warranty before installing our products.

FINISHING UP

- Install shackles.
- Confirm that all hardware is tightened, and everything is secure.
- Secure wiring harnesses for lights and sensors.
- Test all lighting and wiring before using vehicle (fog lights, sensors, etc.).

MAINTENANCE

- Periodically check that all hardware is tightened and that all wiring and connections are secure.
- Periodically check that all sensor plugs are secure.
- Routinely wash bumper to maintain the powder coat finish.

FEEDBACK

We'd love to hear from you!

Please send your pictures, testimonials, comments, or suggestions to us by email at info@bodyguardbumpers.com. We frequently use customer pictures for brochures and marketing materials, and we always welcome customer feedback to ensure quality improvements within our company. Thanks for your purchase; we appreciate your business very much!

Where **STRENGTH** Meets *Style!*™



@BodyguardBumpers